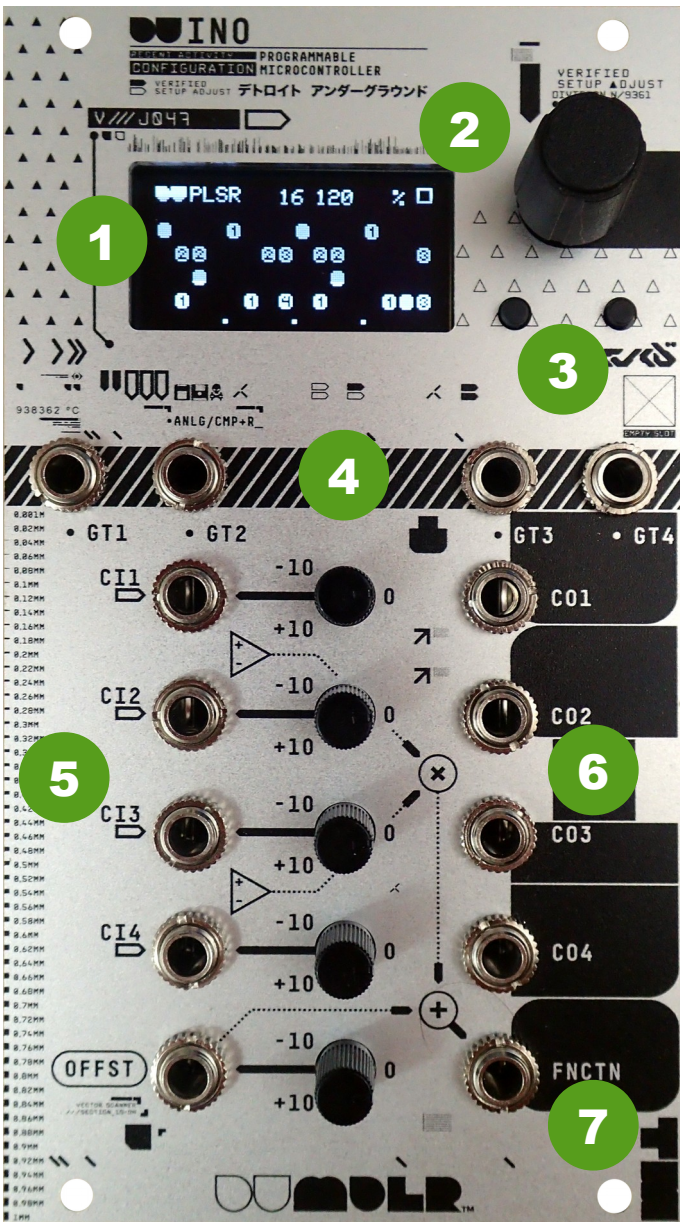
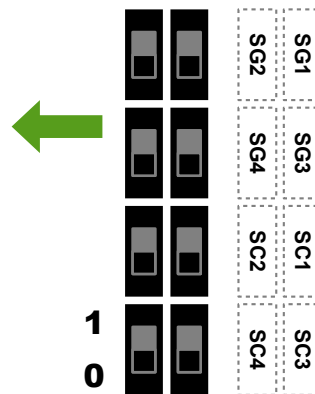


DUINO

RECENT ACTIVITY PROGRAMMABLE CONFIGURATION MICROCONTROLLER



- 1 OLED display**
Displays the UI of the currently loaded function.
- 2 Click encoder**
The main user input. Supports scroll, click, double-click, and hold actions.
- 3 Interrupt pushbuttons**
Connected to GT3 and GT4, respectively; can be used for user input.
- 4 Gate/trigger I/O**
Configurable for input or output. GT3 and GT4 have interrupt capability.
- 5 CV inputs**
CI1 - CI4 can be read by the function; OFFST is for the analog computer only. Set to the knob value when disconnected.
- 6 CV outputs**
CO1 - CO4 can be output by the function; FNCTN is the analog computer output.
- 7 Analog computer**
Sums and multiplies either CV inputs or outputs, depending on configuration.



Gate I/O switches
Configure GT1 - GT4 as output (0) or input (1).

CV routing switches
Route CI (0) or CO (1) to the analog computer.

Width: 14HP · Depth: 30mm · Current draw: 140 mA +12V / 30 mA -12V